



# LIVESTOCK IDENTIFICATION TAGS

IDENTIFICATION • MONITORING • INTELLIGENCE

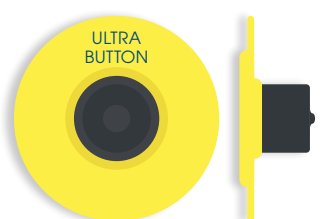
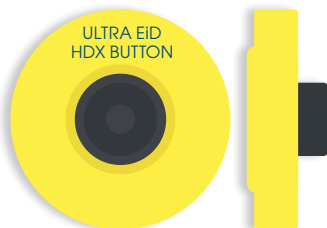
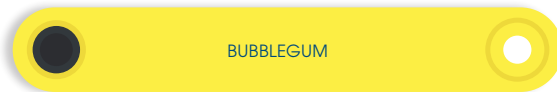
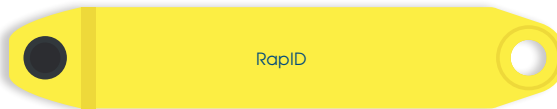
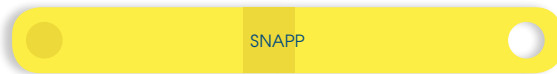


PRODUCT CATALOGUE

**Allflex**  
Livestock Intelligence

# ALLFLEX TAG RANGE

PRODUCTS BELOW SHOWN  
AS ACTUAL SIZE



# INTRODUCTION

## CONTENTS

### CATTLE TAGS

- 04 ULTRA CATTLE TAGS
- 06 ULTRA EID CATTLE TAGS
- 07 TAG AND TEST FOR BVD FROM BIRTH
- 08 CATTLE MANAGEMENT TAGS

### SHEEP TAGS

- 10 EID SLAUGHTER /BATCH TAGS
- 11 EID BREEDING PAIRS
- 13 PEDIGREE/ MANAGEMENT PRINT OPTIONS

### MANAGEMENT TAGS

- 14 SHEEP AND GOATS
- 15 PIGS
- 16 APPLICATORS
- 18 EAR TAGGING - BEST PRACTICE
- 19 EID TECHNOLOGY
- 22 ORDER CHECKLIST
- 23 COLOUR GUIDE



## AN EXPANDING ROLE FOR THE HUMBLE EAR TAG

**The collection, monitoring and archiving of animal data provides intelligence on key management parameters, such as performance, efficiency, welfare and genetic progress. Use of intelligence in this way is increasingly a key ingredient in efficient, profitable and sustainable production. At one time, just a simple method of animal identification, the humble ear tag has evolved to play an increasingly significant role in this new area of livestock farming intelligence.**

In-ear tag technology can help to improve livestock performance and profitability, especially when allied with integrated handling and weighing systems. Dairy farmers routinely use information provided by milking parlour software, such as milk yield and somatic cell counts, to make informed management decisions for breeding or marketing. In the sheep and beef sectors the use of eID (Electronic Identification) tags linked to farm management software can offer the same opportunity to focus on those factors most likely to influence profitability such as daily liveweight gain and finishing weights.

*“The humble ear tag has evolved to play an increasingly significant role in this new area of livestock farming intelligence.”*

Of course, information or intelligence on individual animals can take many forms and cattle ear tags can also play their part in the management and eradication of disease - for example Bovine Viral Diarrhoea (BVD). Tissue Sampling Tags (TST's) take a small biopsy of the ear tissue at the point of application and when analysed can provide information about the disease status of the animal. This can facilitate informed culling and breeding decisions by allowing Persistently Infected (PI) animals - those that carry and spread the disease - to be identified.

# CATTLE TAGS

## ULTRA CATTLE TAGS

Given the legal requirement to identify cattle, livestock producers can gain significant commercial benefit from utilising in-ear tag technology to make informed management decisions. Using Tissue Sampling Tags can help to manage disease whilst EID tags can help to make breeding decisions or market stock at the right weight and specification. Used by livestock producers across the world, Allflex Ultra cattle tags are manufactured from high quality plastic and incorporate design features to ensure free rotation whilst in the ear; ensuring reliability and readability.

- Officially approved and available as senior (large) and junior (medium) flag and button
- Flag tags have reinforced shoulders providing robustness
- 360° tag pin rotation allows tags to freely rotate in the ear
- Female tag is larger than the male tag to allow for easier identification once applied
- Clear black laser printing for distance readability and longevity of the mark
- Available with management print and barcode options
- Available as HDX or FDX EID or Tissue Sample Tags
- Apply with the B06 or B08 Applicator
- **Available colours:** Yellow, Blue, Green, Orange, Pink, Red, White and Purple

## OFFICIAL PRIMARY TAGS



SENIOR  
LARGE



JUNIOR  
MEDIUM



[www.allflex.global](http://www.allflex.global)



[aner.yacobi@allflex-asia.com](mailto:aner.yacobi@allflex-asia.com)



[@allflexasia](https://www.facebook.com/allflexasia)

# CATTLE TAGS

SEE  
PAGE 7  
FOR TISSUE  
SAMPLING  
TAGS

## OFFICIAL SECONDARY TAGS



SENIOR  
LARGE



JUNIOR  
MEDIUM



SENIOR MANAGEMENT  
LARGE



JUNIOR MANAGEMENT  
MEDIUM



SENIOR BARCODED  
LARGE



BUTTON  
SMALL



[www.allflex.global](http://www.allflex.global)



[aner.yacobi@allflex-asia.com](mailto:aner.yacobi@allflex-asia.com)



[@allflexasia](https://www.facebook.com/allflexasia)

# CATTLE TAGS

## ULTRA EiD CATTLE TAGS

- HDX (Half Duplex Tag) parlour tags are designed to work with all HDX parlour systems
- The technology optimises signal transmission and provides the greatest possible read distance
- For total control/traceability in the milking, feeding and identification of individual animals
- Choose between discreet EiD Button tags, or EiD Flag tags for greater visibility
- Apply with either the B06 or B08 applicator; remember to remove the black insert prior to fitting female EiD tags
- **Available colours:** Yellow and White



EiD  
SENIOR  
STANDARD  
PRINT



EiD SENIOR  
MANAGEMENT  
PRINT ON FLAG



EiD SENIOR  
MANAGEMENT  
PRINT ON BUTTON



EiD BUTTON

PLEASE  
SUPPLY A  
VALID E-MAIL  
ADDRESS WHEN  
ORDERING YOUR  
EiD CATTLE TAGS TO  
RECEIVE YOUR  
TAG BUCKET  
FILE

B06 TOTAL  
TAGGER



Applying EiD tags to calves at birth and using these in conjunction with an EiD reader and weigh indicator can significantly aid the monitoring and management of youngstock helping you to make informed management decisions - see pages 19 to 20 to find out more.

# CATTLE TAGS

## TAG AND TEST FOR BVD FROM BIRTH

SEE PAGE 17  
FOR THE TST  
APPLICATOR

Use Tissue Sampling Tags (TST's) to help eradicate Bovine Viral Diarrhoea (BVD) from your herd. Doing so will help to increase overall productivity and profitability and could give a potential price premium through selling BVD free stock.

- BVD is a highly contagious viral disease of cattle
- There can often be no obvious clinical signs of infection
- The disease can cause reduced growth rates and milk yield, abortion and secondary disease

An important tool to help you towards a BVD free future...

- Officially approved cattle tags; use management TST's to test older cattle
- Take a sample of tissue as part of the normal tagging process
- The sample is tested in the laboratory to determine the BVD status of the individual animal
- Infected animals can be identified for culling
- BVD free animals can be recorded on your national database
- **Available colours:** Yellow and White



Tissue Sample Button Tag with Sample Tube

NEW STYLE  
LIQUID FILLED  
SAMPLE TUBE

LIQUID FILLED  
MICRO SAMPLE TUBE

TISSUE SAMPLING NEEDLE

MALE TISSUE  
SAMPLE TAG

FEMALE TISSUE  
SAMPLE TAG  
(WHITE CAP)

MALE VISUAL TAG

FEMALE VISUAL TAG  
(BLACK CAP)



# CATTLE TAGS

## CATTLE MANAGEMENT TAGS

### AVAILABLE EITHER PRINTED OR BLANK

Management tags can be used for a number of reasons and can assist in the identification, monitoring and ongoing management of selected animals. Our Ultra tags are ideal for management purposes either printed or blank for you to then mark to suit your own system. All of the tags featured on this page can be applied using the B06 or B08 applicators\*.

#### Ideal for:

- ✓ Breeding decisions
- ✓ Pedigree management
- ✓ Disease management
- ✓ Cull selection
- ✓ Health status
- ✓ Temperament/behaviour characteristics



SENIOR  
LARGE



JUNIOR  
MEDIUM

#### TST MANAGEMENT BUTTON

ALSO AVAILABLE AS SENIOR AND JUNIOR MANAGEMENT IN WHITE OR YELLOW

Use TST management button tags \*applied with a B07MICRO applicator for testing older, pre-tagged cattle.



#### EID BUTTON



#### REUSABLE OPEN HEAD EID BUTTON

WITH LONG STEM MALE PIN  
TO ENABLE EASY REMOVAL



4MM  
LONGER  
THAN A  
STANDARD  
MALE PIN

#### TAG MARKER

An all weather, long lasting, fade resistant tag marker pen, supplied with a fine and narrow nib.



[www.allflex.global](http://www.allflex.global)



[aner.yacobi@allflex-asia.com](mailto:aner.yacobi@allflex-asia.com)



@allflexasia





## SenseHub™ The next generation in cow monitoring

### A new solution from the world leaders in livestock monitoring and identification

- Unmatched heat detection accuracy
- Actionable insight for proactive, individualised health management
- Advanced group monitoring
- Choice of neck or ear tags
- Flexible application plans - Starter, Advanced and Premium
- Multiple user device options - mobile, tablet, PC and SenseTime Panel
- Subscription or upfront payments
- One-box installation
- Third-party management connectivity



[www.allflex.global](http://www.allflex.global)



[aner.yacobi@allflex-asia.com](mailto:aner.yacobi@allflex-asia.com)



[@allflexasia](https://www.facebook.com/allflexasia)

# SHEEP TAGS

## DID YOU KNOW?

We can print management information on slaughter/batch tags

## EiD SLAUGHTER/BATCH TAGS

### SLAUGHTER/ BATCH TAG ONLY



### RapID

MINIMUM ORDER 10

Speed up identification of your market ready stock with the RapID Semi-Automatic Tagging System – tag up to 300 lambs per hour! Supplied in strips of 20, the RapID can also be applied with the RapID Single Shot Applicator.

Please note this is a special order item, please contact us for lead times.



### BUBBLEGUM

MINIMUM ORDER 10

Concealing the transponder in the tag pin allows for excellent weight distribution. Manufactured from ultra-flexible plastic, the tip of the tag pin has a cross cut point which helps tag application by cutting through ear tissue as opposed to punching through.



### SNAPP

MINIMUM ORDER 10

Based on the original sheep loop tag, the SNAPP tag is lightweight yet durable and contains a waterproof and shock resistant transponder. This one piece tag locks together tightly without pinching the ear.



SEE PAGE 16 AND 17 FOR APPLICATORS



[www.allflex.global](http://www.allflex.global)



[aner.yacobi@allflex-asia.com](mailto:aner.yacobi@allflex-asia.com)



[@allflexasia](https://www.facebook.com/allflexasia)

# SHEEP TAGS

## EiD BREEDING PAIRS

### BUBBLEGUM

- A great 'tag for life' which is manufactured from an ultra-flexible plastic
- Concealing the transponder in the tag pin allows for excellent weight distribution
- The tip of the tag pin has a cross cut point which helps tag application by cutting through ear tissue as opposed to punching through
- Can be cut to create a two piece tag
- Lightweight yet robust applicator
- Management print options are available - see page 13
- **Applicator:** B49
- **Available colours (EiD)\*:**  
Yellow, Blue, Green, Orange, Pink, Red and White
- **Available colours (visual):**  
Yellow, Blue, Green, Orange, Pink, Red, White, Brown, Grey, Purple and Spearmint



# SHEEP TAGS

NEW TAG

## EiD BREEDING PAIRS

### MINI EiD BUTTON

This new, lightweight EiD button tag enables flock managers to take full advantage of the management benefits of EiD; especially when tagging lambs at birth.

- Fits securely within the ear
- High quality laser marking
- Diameter: 24mm
- Choose from 3 visual match up options
- Management print options are available - see page 13
- **Applicator:** B08 (NB: please remove the black insert from the applicator before fitting the female EiD button)
- **Available colours\*:** Yellow, Blue, Green, Red and Purple



REAP THE COMMERCIAL BENEFITS OF EiD BY APPLYING EiD TAGS AT BIRTH



USE THE SAME APPLICATOR TO PAIR WITH ONE OF THE FOLLOWING THREE VISUAL TAGS:

### A. ULTRA BUTTON

**Available colours:** Yellow, Blue, Green, Orange, Pink, Red, White and Purple

ULTRA BUTTON

MINI EiD BUTTON



### B. OVINA

**Available colours:** Yellow, Blue, Green, Orange, Pink, Red, White, Purple and Black

OVINA

MINI EiD BUTTON



### C. ACE

**Available colours:** Yellow, Blue, Green, Orange, Pink, White, Purple and Black

ACE

MINI EiD BUTTON



[www.allflex.global](http://www.allflex.global)



[aner.yacobi@allflex-asia.com](mailto:aner.yacobi@allflex-asia.com)

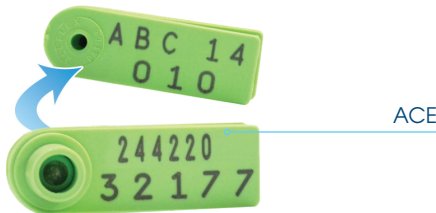
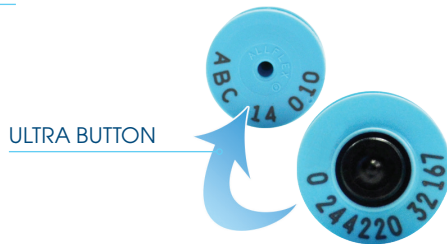
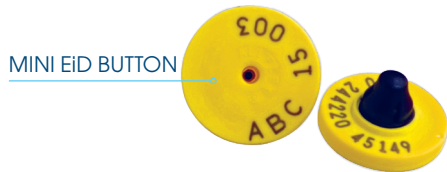
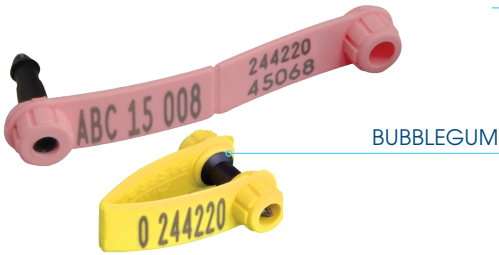


@allflexasia

# SHEEP TAGS

## PEDIGREE/MANAGEMENT PRINT OPTIONS

We can print text and numeric management information on all of our sheep tags, please contact your local dealer to discuss your specific requirements.



# MANAGEMENT TAGS

## SHEEP AND GOATS

AVAILABLE EITHER PRINTED OR BLANK

### BUBBLEGUM

MINIMUM ORDER 10

- **Applicator:** B49
- **Available colours:** Yellow, Blue, Green, Orange, Pink, Red, White, Brown, Grey, Purple and Spearmint



### OVINA

NO MINIMUM ORDER

- **Applicator:** B08
- **Available colours:** Yellow, Blue, Green, Orange, Pink, Red, White, Purple and Black



### MINI DALESMAN

MINIMUM ORDER 10

- **Applicator:** 09025
- **Available colours:** Yellow, Sky Blue, Lime Green, Orange, Pink, Red, White, Lilac and Grey



### ADAMATIC

MINIMUM ORDER 10

- **Available Colours:** Yellow, Blue, Green, Orange, Pink, Red, White, Brown, Grey, Purple, Black, and Spearmint



### ADAMATIC TAGGER

- **Product Code:** 66000103



### D TAG

MINIMUM ORDER 10

- **Available Colours:** Blue, Green, Orange, Pink, Red, White, Purple and Black

### D TAG TAGGER

- **Product Code:** B40



[www.allflex.global](http://www.allflex.global)



[aner.yacobi@allflex-asia.com](mailto:aner.yacobi@allflex-asia.com)



[@allflexasia](https://www.facebook.com/allflexasia)

# MANAGEMENT TAGS

## PIGS

AVAILABLE EITHER PRINTED OR BLANK



JUNIOR MEDIUM

- Large flag makes for easier visibility
- Flexible plastic
- Supplied blank or with high quality laser marking
- **Applicator:** B08
- **Available colours:** Yellow, Blue, Green, Pink, Red, Purple and White



OVINA

- Large flag makes for easier visibility
- Flexible plastic
- Supplied blank or with high quality laser marking
- **Applicator:** B08
- **Available colours:** Yellow, Blue, Green, Orange, Pink, Red, White, Purple and Black



STEEL PIG TAG

MINIMUM ORDER 10

- Made to withstand carcase heat treatment at slaughter
- Small steel tag, with curl lock
- Folded/crimped tag dimensions are 28mm x 6mm, with clearly etched ID
- **Applicator:** B70



ULTRA BUTTON

- Diameter 28mm
- Good long term tag, management information can be printed on the back
- **Available Colours:** Yellow, Blue, Green Orange, Pink, Red and White

## SLAP MARKER



INDIVIDUAL NUMBERS & LETTERS AVAILABLE



[www.allflex.global](http://www.allflex.global)



[aner.yacobi@allflex-asia.com](mailto:aner.yacobi@allflex-asia.com)



@allflexasia

# APPLICATORS

SPARE PINS  
AND INSERTS  
AVAILABLE

Contact us for details.

RapID SINGLE SHOT  
APPLICATOR

PART CODE: RAPIDEIDSINGLE



RapID MULTISHOT  
APPLICATOR

PART CODE: RAPIDEIDMULTI



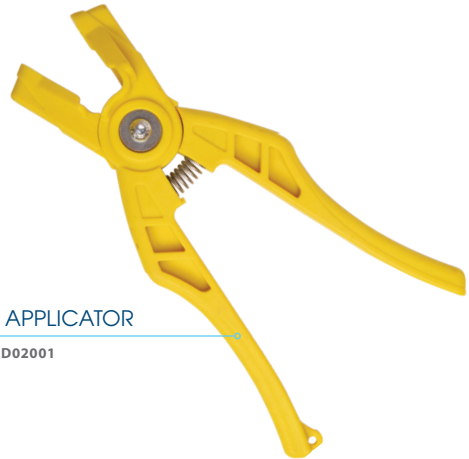
BUBBLEGUM  
APPLICATOR

PART CODE: B49



KLIK TAG APPLICATOR

PART CODE: ID02001



SNAPP TAG  
APPLICATOR

PART CODE: 09028



[www.allflex.global](http://www.allflex.global)



[aner.yacobi@allflex-asia.com](mailto:aner.yacobi@allflex-asia.com)



[@allflexasia](https://www.facebook.com/allflexasia)



# APPLICATORS

USE PIN TO  
APPLY ULTRA  
VISUAL TAGS



UNIVERSAL TISSUE  
SAMPLE TAG APPLICATOR

PART CODE: B07MICRO



USE TO ADAPT YOUR  
BLACK AND YELLOW TST  
APPLICATOR FOR LIQUID  
FILLED MICRO TUBES  
PART CODE: 67001768

PIN  
FLIPS  
OUT

FLIP PIN  
APPLICATOR

PART CODE: B08



UNIVERSAL  
APPLICATOR (RED)

PART CODE: B06



MINI DALESMAN  
APPLICATOR

PART CODE: 09025



METAL PIG TAG  
APPLICATOR

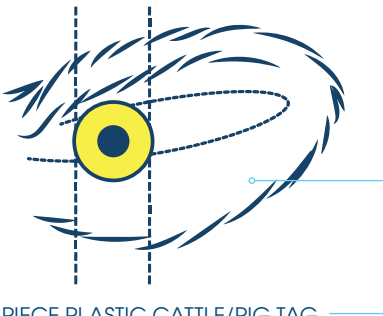
PART CODE: B50



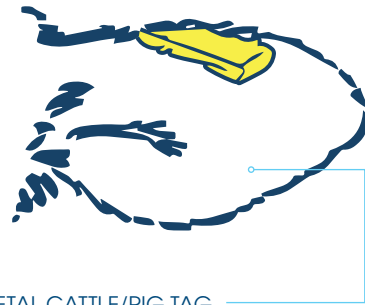
# EAR TAGGING - BEST PRACTICE

Improve ear tag retention rates by following a few simple guidelines.

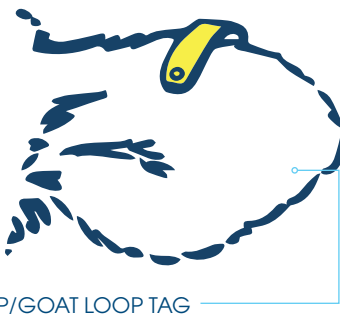
- Ensure the correct applicator is selected for the tag and that you have read the instructions.
- Record tag numbers before application.
- To minimise infection and fly strike, avoid applying tags during spells of hot weather (where possible) and ensure your hands and the applicator are clean.
- Restrain the animal's head to prevent jerking whilst tagging.
- Ensure the male and female parts of the tag are positioned correctly in the applicator.
- In the case of two-piece plastic tags, ensure that both parts of the tag have the same number. The female part of the tag should always be applied on the inside of the ear; this will reduce the chance of the tag snagging or catching on obstructions. The male part of the tag should always enter the back of the ear and be placed as centrally as possible between the veins of the ear.
- Check the ear 10 days after tagging for signs of damage or infection. Consult your Veterinary Surgeon as necessary. Store unused tags in a clean dry container away from extremes in temperature and humidity.
- When tagging youngstock allow room for ear growth.



TWO PIECE PLASTIC CATTLE/PIG TAG



METAL CATTLE/PIG TAG



SHEEP/GOAT LOOP TAG



TWO PIECE PLASTIC SHEEP/GOAT TAG

# EiD TECHNOLOGY

When an EiD tag is printed a microchip encased within the tag is programmed with the same number that is printed on the tag. The tag is applied to the animal and when an electronic reader is switched on it transmits a signal which is received by the microchip. In return, the microchip transmits a signal back to the reader which contains the unique animal number. These numbers are then stored within the reader's memory until they are downloaded onto a computer or, in the case of a milking parlour, enable the cow to move through the parlour. There are two types of microchip used in EiD tags and boluses; Full Duplex (FDX-B) and Half Duplex (HDX).

**TAG ANIMALS  
FROM BIRTH  
TO REAP THE  
MANAGEMENT  
BENEFITS OF EiD  
SOONER**

## WHAT TYPE OF INFORMATION CAN EiD TECHNOLOGY PROVIDE ME WITH?

If used in conjunction with a reader, EiD technology can provide you with a simple list of animal numbers or a vast amount of information to aid flock and herd performance including:

### INDIVIDUAL ANIMAL PERFORMANCE:

- Breed
- Age
- Sex
- Body condition score
- Disease susceptibility
- Parentage
- Pregnancy data
- Milk yield
- Movements
- Drug treatments and withdrawal periods

### SIRE AND DAM PERFORMANCE:

- Progeny weaning weights
- DLWG
- Carcass weight and grading

### THE BENEFITS OF EiD:

- ✓ Save time and effort – improve productivity
- ✓ Traceability – manage stock across multiple holdings and identify parentage for breeding purposes
- ✓ Reliable and legible records – always be inspection ready
- ✓ Used in conjunction with weighing equipment, market stock at the correct specification and avoid carcass penalties
- ✓ Use to identify disease susceptible animals for an evidence-based culling strategy
- ✓ Improve pedigree animals by making informed breeding decisions based on sire and dam performance

*"We scanned 53 sheep this morning in less than one minute. Before we had the stick reader, I was calling out tag numbers which so often got lost in translation by the time they were written down, or sometimes were difficult to read."* Tom Hutchinson.



[www.allflex.global](http://www.allflex.global)



[aner.yacobi@allflex-asia.com](mailto:aner.yacobi@allflex-asia.com)



[@allflexasia](https://www.facebook.com/allflexasia)

# EID TECHNOLOGY

## ALLFLEX RS420 STICK READER

- Easy to read display
- Bluetooth capability
- Long life rechargeable battery
- Rugged
- Reliable

**READS  
ALL EID  
TAGS**

(ISO standard)



TIME INDICATOR

BATTERY LIFE  
INDICATOR

TOTAL ANIMAL  
COUNTER

SESSIONS INDICATOR



## THE BUNDLE

PART CODE: STICKRS420-BUNDLE

S420 STICK READER

- iPad Mini 4
- iLIVESTOCK MANAGEMENT APP



TOUGH CASE

RS420 STICK READER

LI-ION BATTERY

POWER PACK/CHARGER

USB ADAPTER CABLE



[www.allflex.global](http://www.allflex.global)



[aner.yacobi@allflex-asia.com](mailto:aner.yacobi@allflex-asia.com)



@allflexasia

**“Using EiD tags from birth means I can easily scrutinise each animal’s records and make more profitable decisions.”**



Jamie Wild, Redhill Farm, Oakham

Tagging early enables you to get a better understanding of your flock by gathering real-time data.

This data allows you to build a clear picture of each lamb's performance and can be used to make informed health management, breeding and marketing decisions leading to improved efficiency and profitability.

**It has to be an Allflex tag all the way.**



Livestock Intelligence

# ORDER CHECKLIST

KEEP HANDY  
FOR FARM  
ASSURANCE  
INSPECTIONS

Make life easier when ordering your tags by keeping a note of important information here.

<b>Your Allflex/Merchant Account No:</b>	
<b>CPH Number:</b>	
<b>Herd Mark:</b>	
<b>Flock Mark:</b>	

DATE	TAG TYPE(S)	SIZE	COLOUR	SEQ. NUMBERS	MANAGEMENT PRINT

NOTES

# COLOUR GUIDE



Colours may vary, please use as a guide only.



[www.allflex.global](http://www.allflex.global)



[aner.yacobi@allflex-asia.com](mailto:aner.yacobi@allflex-asia.com)



[@allflexasia](https://www.facebook.com/allflexasia)



Livestock Intelligence



[www.allflex.global](http://www.allflex.global)



[aner.yacobi@allflex-asia.com](mailto:aner.yacobi@allflex-asia.com)



[@allflexasia](https://www.facebook.com/allflexasia)