



QUICK AND EASY TISSUE SAMPLING TECHNOLOGY

INSTRUCTIONS FOR USE

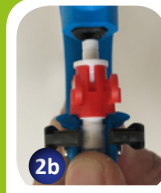
A. LOADING THE ALLFLEX TSU APPLICATOR



1
Take an assembled TSU (needle + connection piece + collection tube)



2a
Squeeze the two spring loaded retainer clips together



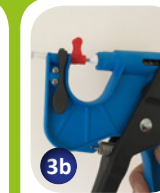
2b
And insert the TSU as shown in the picture



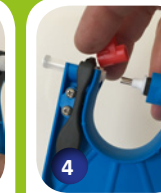
2c
After insertion of the TSU release the spring loaded clips to lock in the tube



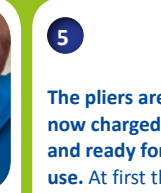
3a
Carefully squeeze the plier handles until the large piston comes to a stop against the red connection piece



3b
You have now completely grabbed the needle. After the needle is inserted into the piston you can release the handles



4
You can now easily remove the red connection piece while holding the two red tabs and pushing sideways



5
The pliers are now charged and ready for use. At first this charging action seems long but with experience this should only take a couple of seconds

TAKE CARE

NOT TO CUT FINGERS ON THE METAL NEEDLE. IT IS VERY SHARP!

B. TAKING AN EAR NOTCH SAMPLE



1a
Slide the charged pliers over the ear and position the cutter about 1cm to 2cm from the edge of the ear



1b
Try to avoid large veins and ridges. The sample should be taken in a very swift, fluid motion



2a
Remove the TSU tube from the pliers by squeezing the two spring loaded clips together, then slide out the tube



2b
A tissue sample should be clearly visible inside the tube



3
Remove the used needle from the pliers by pushing the handles apart. This will loosen the needle and make it easy to remove. You cannot reuse the needle as it has no red plunger



4
The TSU is for SINGLE USE only, both the tubes and the needles can't be re-used! See the difference between an unused and a used TSU



5
In the used TSU a clear RED plunger will be visible indicating the tube already contains a sample and can't be used again

DISCARD THE NEEDLE SAFELY

CAUTION: THE NEEDLE IS VERY SHARP, MIND YOUR FINGERS!

MAINTAINING YOUR TSU APPLICATOR

CLEANING

- The applicator should be cleaned with a cloth to remove any dirt.
- Wash with warm soapy water or blast with air if the applicator is particularly dirty.



STORAGE

- After cleaning and ensuring the plier is completely dry, store in an airtight bag to prevent damage.



Allflex Australia Pty Ltd
33 Neumann Road
Capalaba QLD 4157
Australia
P: 1300 138 247
F: 07 3245 9110
www.allflex.com.au

Allflex New Zealand Ltd
Private Bag 11003
Palmerston North
New Zealand
P: 06 356 7199
F: 06 355 3421
www.allflex.co.nz



Identify the Difference