

Fleximatic Repair Instructions

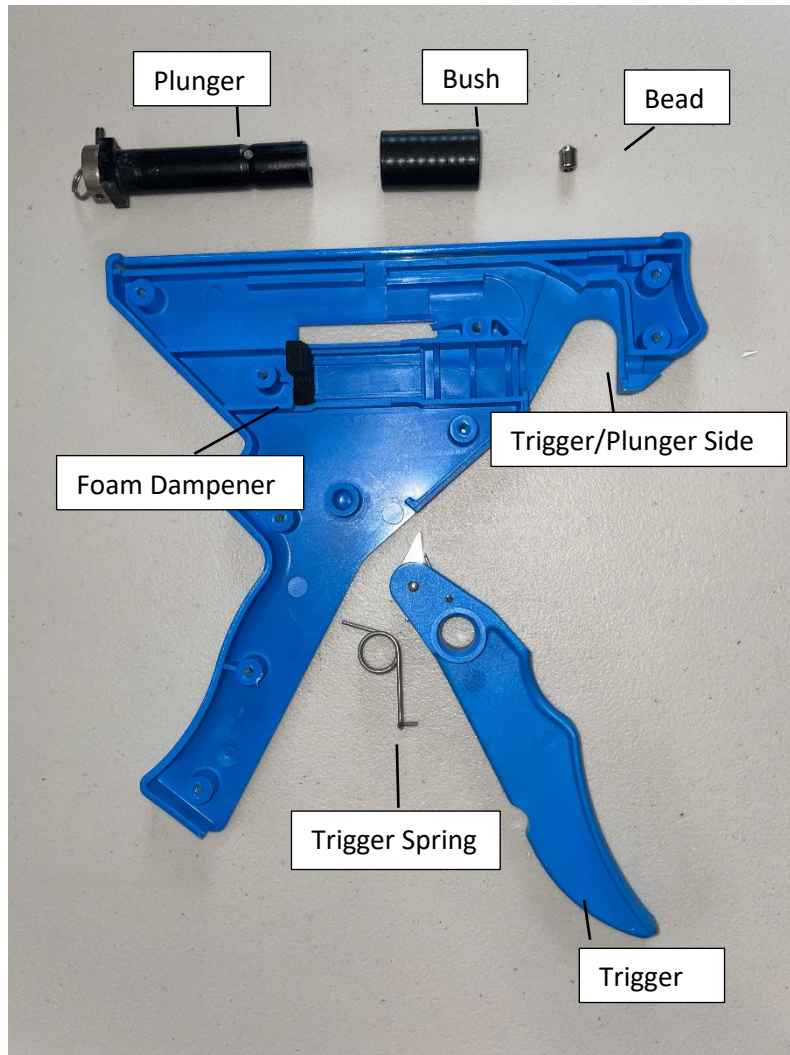
Tools:

1x Philips Head Screw Driver

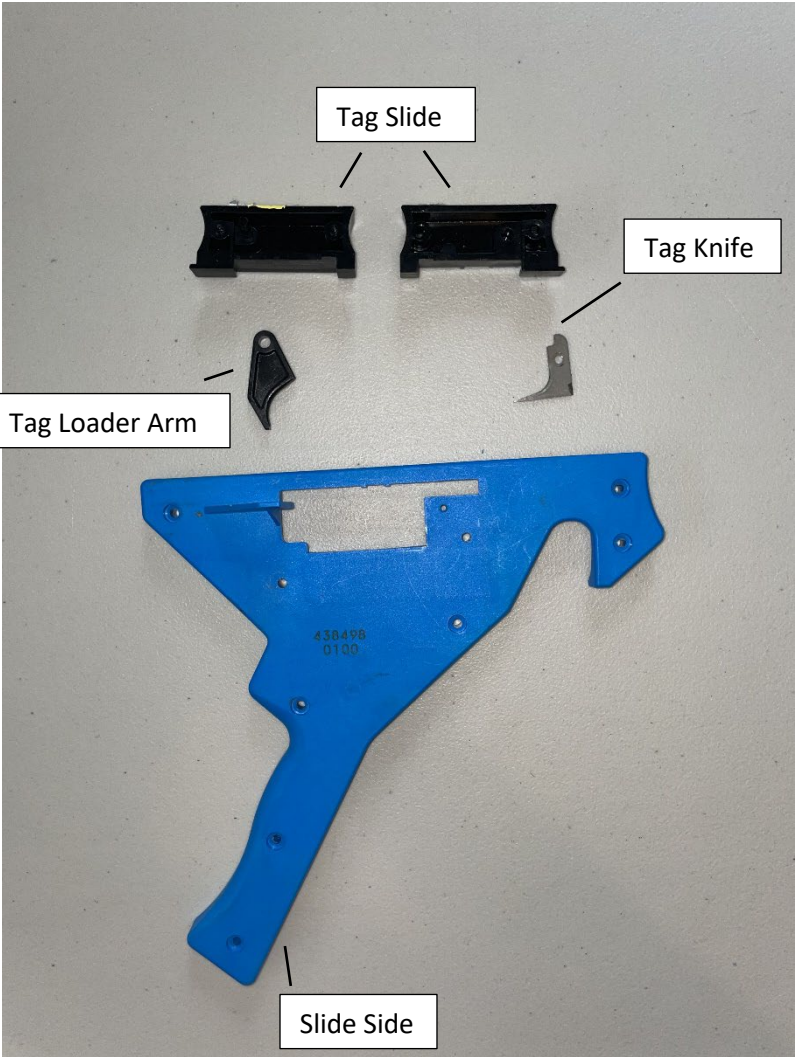
****Please note that using an electric power drill to disassemble and reassemble a Fleximatic applicator will likely cause irreversible damage to the applicator****

Parts Breakdown

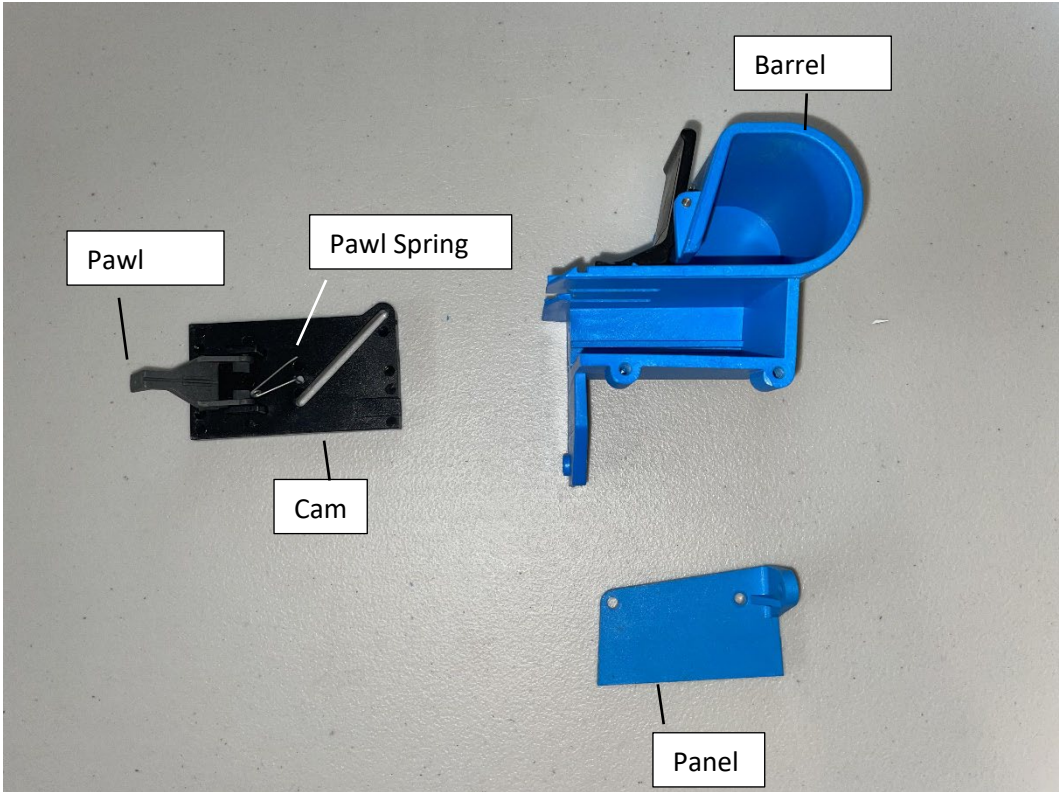
Trigger/Plunger Side Parts Diagram:



Slide Side Parts:

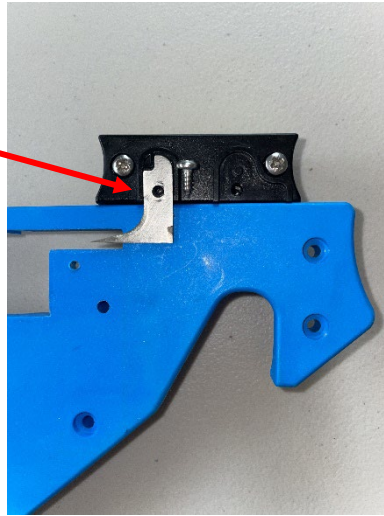


Barrel Parts:

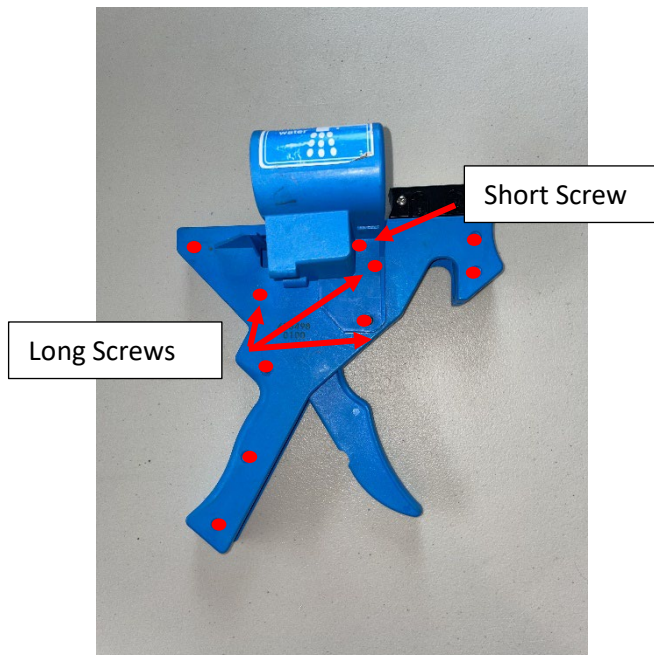


Disassembly and Tag Knife Replacement

1. Unscrew the tag knife to replace or leave removed to perform further repairs

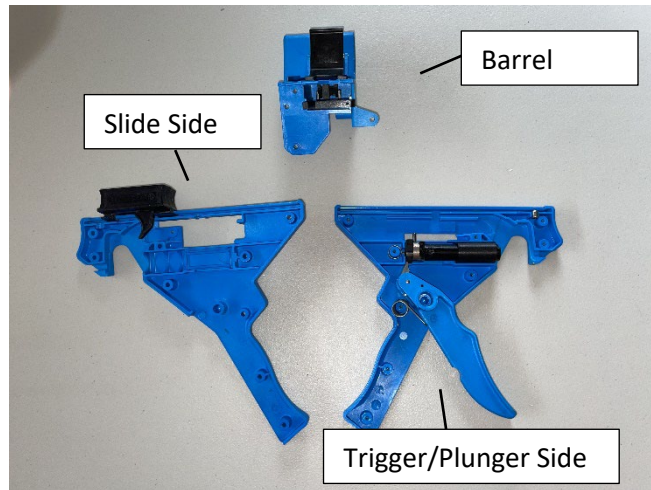


2. Remove the 10 screws from the side of the applicator, note which holes the 3x longer and 1x shorter screws are from. Once the screws 3x long and 1x short screws are removed, wriggle the barrel free and place to the side.



3. With the applicator lying flat on a table pull the top half away from the bottom half. Please note that the applicator is spring loaded so remove the halves slowly and gently to avoid losing any of the spring loaded parts.

4. There are 3 main sections to the Fleximatic applicator; the trigger/plunger side, the slide side and the barrel



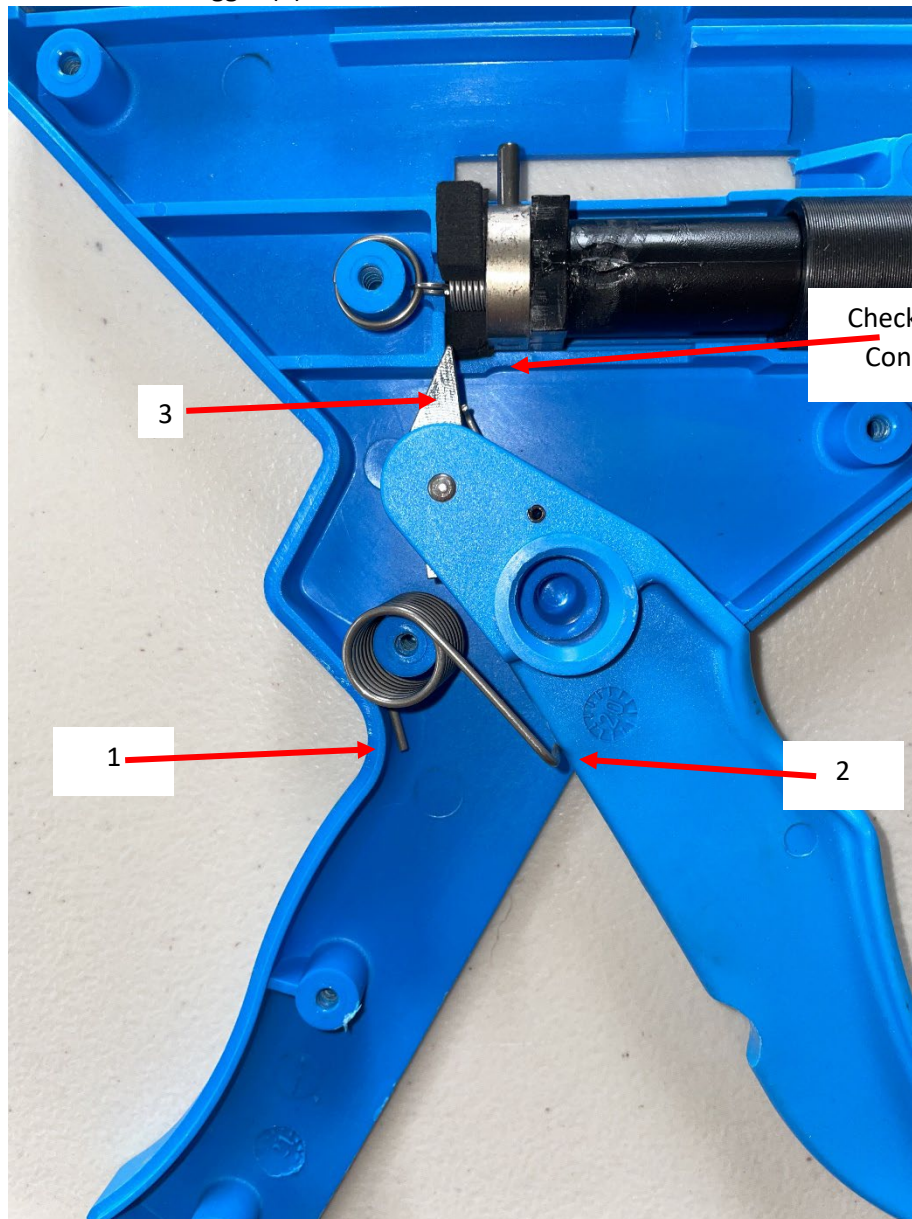
Trigger Spring Replacement

5. Place the trigger/plunger side of the applicator on a table.



6. Lift off the trigger and discard the old spring. Check that the trigger is in good usable condition and that the metal arm at the top is still springing back and forth effectively. Place the trigger back into it's position.

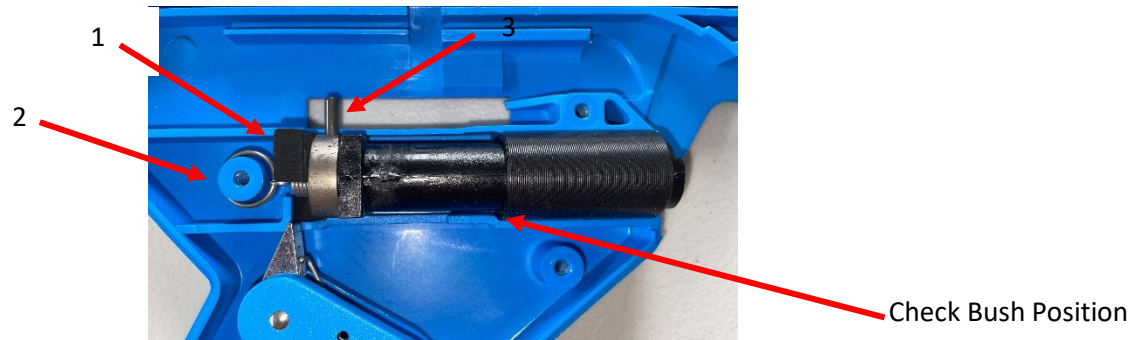
7. Next place the new trigger spring into position, its centre goes over the central round shaped screw hole. The shorter straight tail of the spring sits against the outer blue wall of the applicator (1). Next pinch the ends of the spring together and tuck the bent end of the spring underneath the trigger (2).



8. Ensure that the metal arm at the top of the applicator is positioned in the groove behind the plunger's metal plate (3).

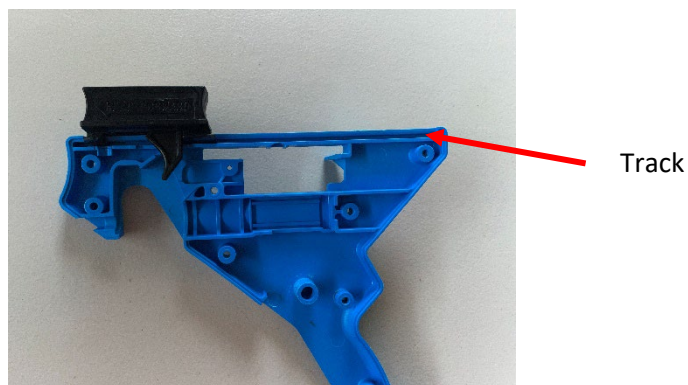
Plunger Replacement

9. Remove the old plunger and bush by extending the spring away from the foam dampener (1) and then release the spring from around its holder (2).
10. To put in the new plunger, pull out it's spring a few centimetres and loop the end over it's holder and seat the plunger into it's place. Ensure that the metal bar is pointing upwards (3)
11. Place the bush over the shaft of the plunger ensuring that the bush is seated in it's slot against the blue wall of the applicator.



Tag Loader Arm Replacement

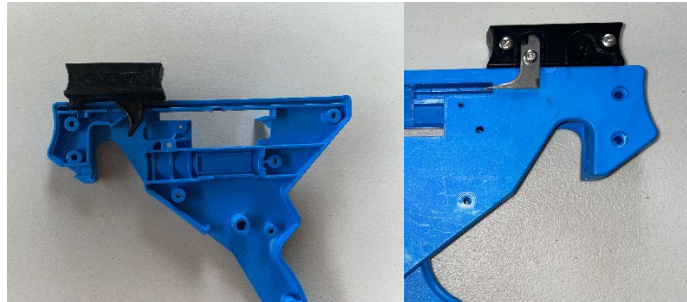
12. Remove the slide from it's track in the blue housing.



13. Unscrew the 2x screws in the tag slide. Once unscrewed, cut the sticker along the join line and then pull apart the 2x halves of the slide.



14. Remove the old tag loader arm, note it's orientation within the slide casing, the curve faces forwards.
15. Place the new tag loader arm into place. Then press the 2x halves of the slide back together and screw together.
16. Seat the slide back into its track in the blue housing, then screw the tag knife and tag guide back into place. Take care when handling the knife as it is sharp.



17. Ensure that the slide is able to move up and down its track.

Cam and Pawl Replacement

18. Place the barrel in front of you so that the 2x screws are visible. Unscrew them and remove the blue side piece.

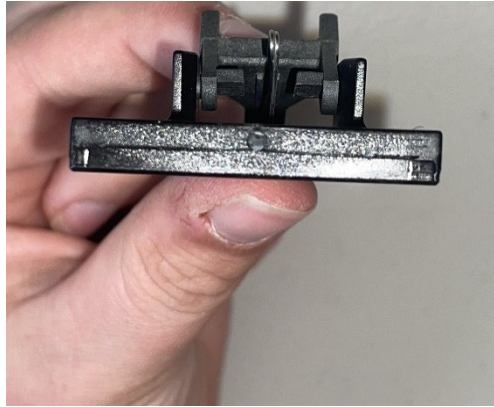


19. To slide the cam and pawl out of the housing, slide the cam to its outer most position. Then pinch the cam down to the pawl and wriggle it free. Be careful not to break any of the parts, sometimes it is helpful to stretch the blue housing with your other hand as you wriggle.



20. Dispose of the old cam and pawl

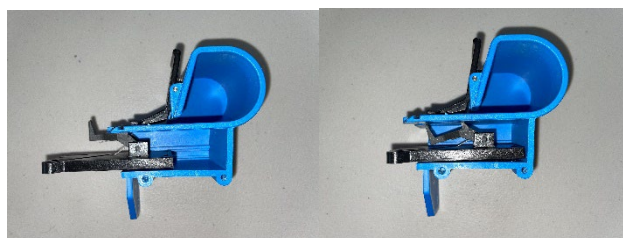
21. To put in the new cam and pawl ensure that the bottom of the pawl spring sits in the circular hole within in the cam and that the top of the spring sits in the groove at the bottom of the pawl.



22. Pinch the pawl down to the cam while using your thumb to hold the base of the spring in place. Use your other hand to gently stretch the blue housing whilst sliding the cam into place.



23. Check that the spring has stayed in place by sliding the cam in and out. The pawl should rise when the cam is out and fall when the cam is in. If the spring has shifted, remove the cam and pawl and redo the previous step.



24. Ensure that the cam is within its groove in the blue housing and replace the blue slide. Once you have confirmed that it is seated correctly, screw the blue side into place.



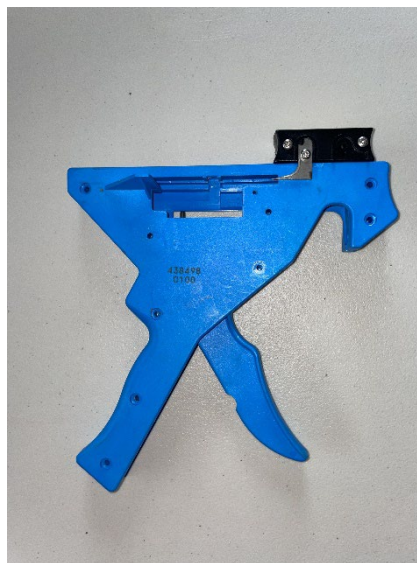
Reassembly

25. Place the trigger/plunger side of the applicator in front of you, ensure that all parts are in their correct positions. Do not forget to ensure that the bead is in place.

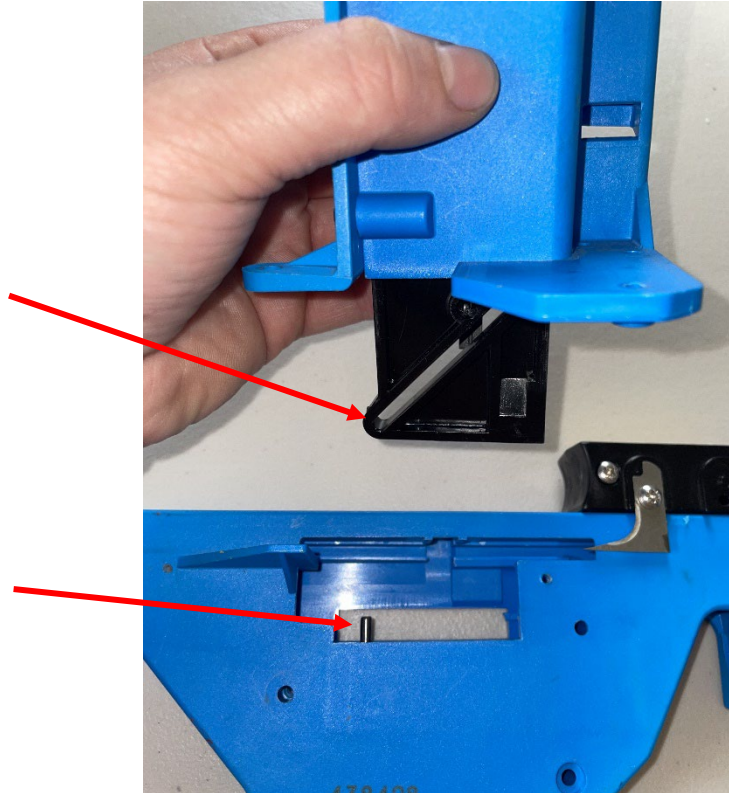


Check Bead is in Place – If it Sits too High the Slide Will Jam

26. Place the slide side of the applicator on top of the plunger/trigger side ensuring that the screw holes line up.



27. The next step is to place the barrel onto the rest of the applicator. Ensure that the tag slide is all the way forward. If the slide will not go all the way forward the bead will need to be pushed down into position. Then move the cam into the outward position and locate the diagonal cut out. Slide this cut out over the metal bar at the top of the plunger. Once in place, wiggle the barrel onto the applicator and align the remaining screw hole.



28. While holding the applicator together, test that the trigger causes the plunger to move in and out correctly. Once you are sure that the trigger operates correctly, screw the applicator back together.



29. Run a strip of Flexi tags through the applicator to ensure that it functions correctly before heading to the yards.