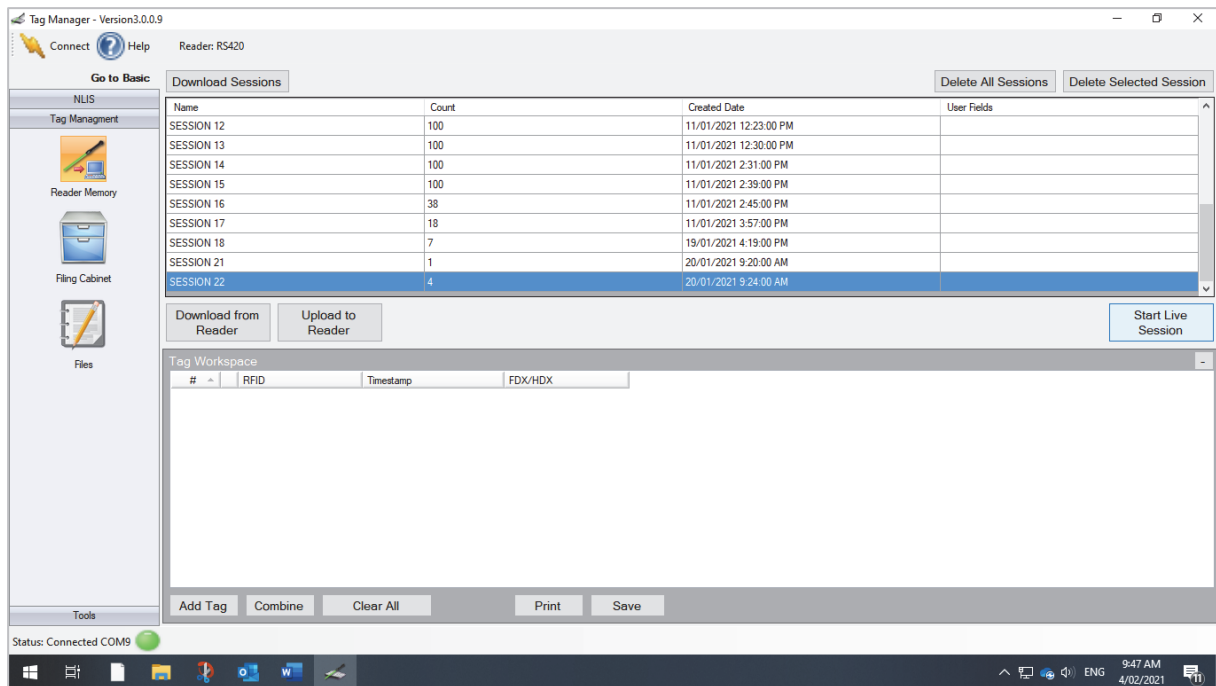
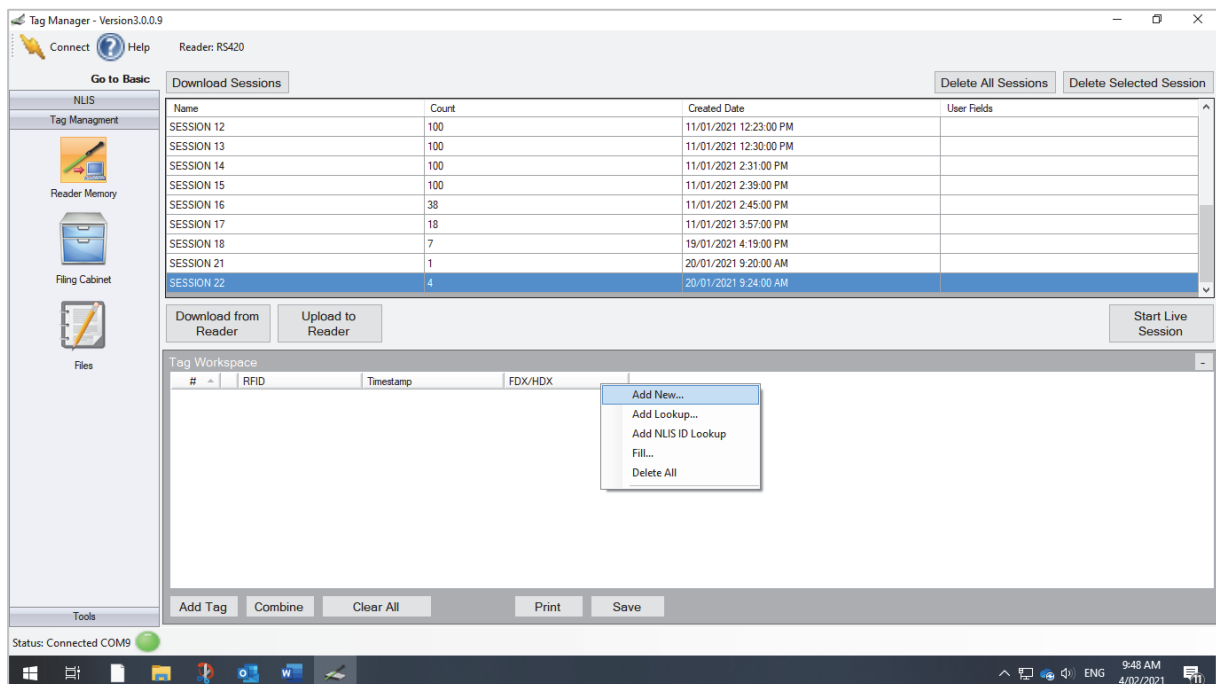


TSU recording using Tag Manager

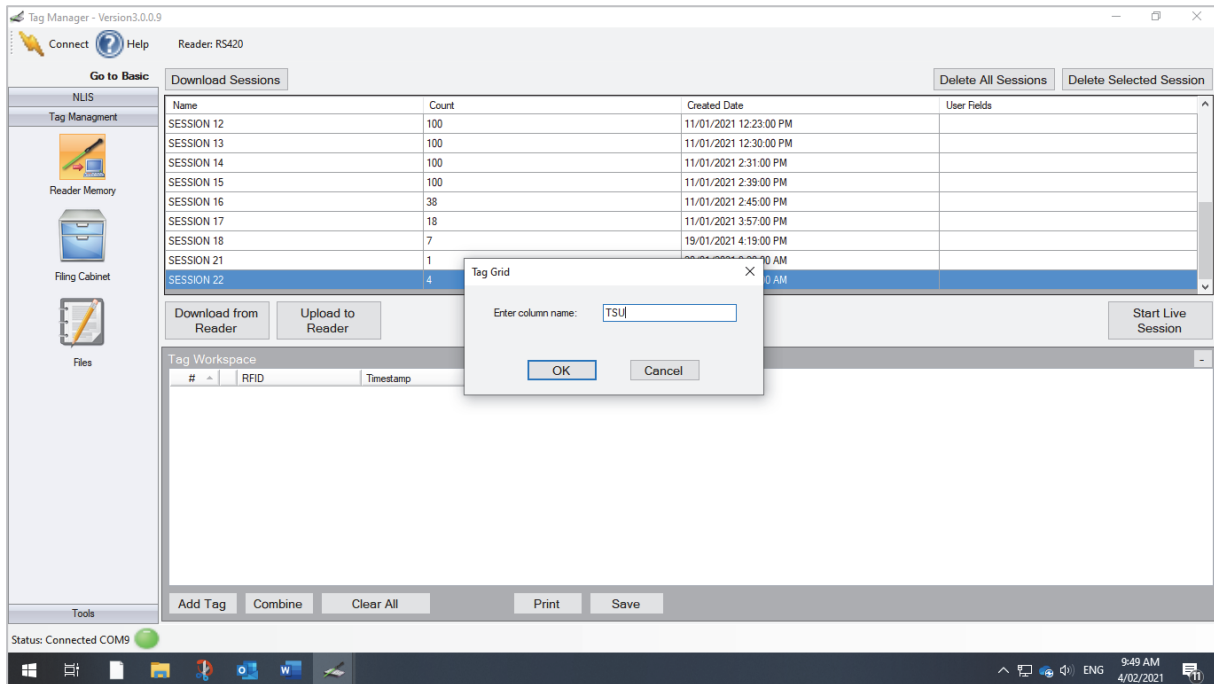
1. Ensure RS420 is connected to PC via BT, connect Barcode Scanner via USB.
Open Tag Manager, go to Tag Management screen.



2. Right click on existing column, select Add New.

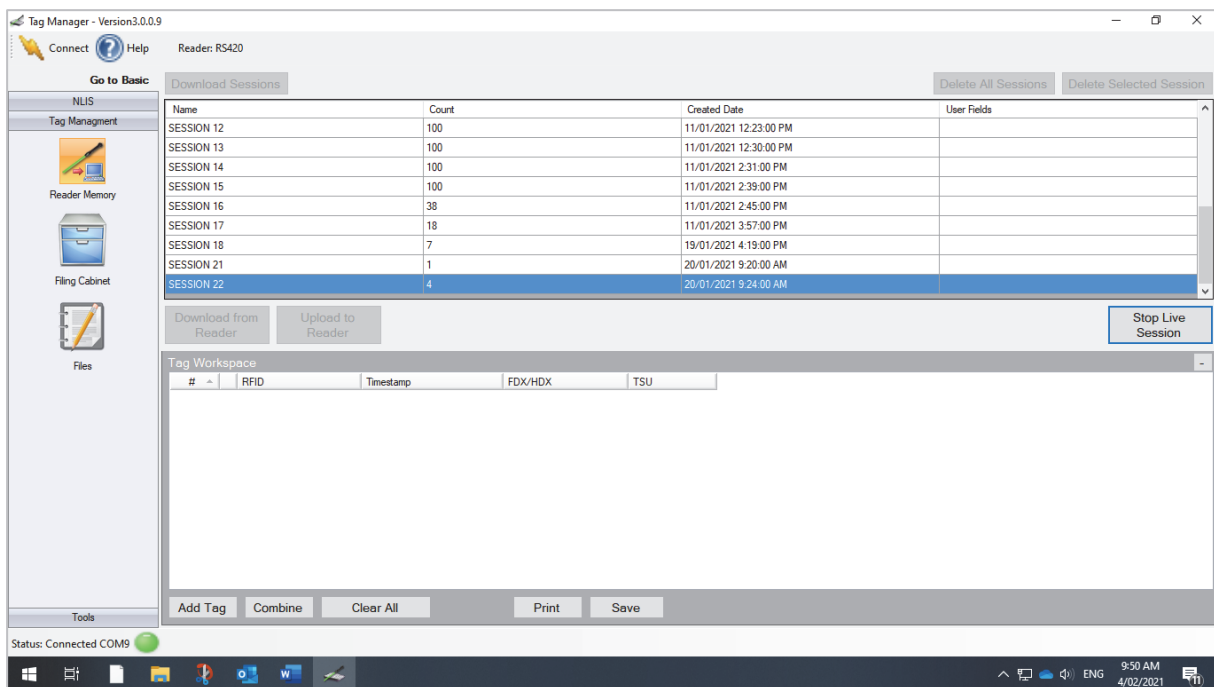


3. Enter required column name.



The screenshot shows the Tag Manager interface with a 'Tag Grid' dialog box open. The dialog box contains the text 'Enter column name: TSU|' and 'OK' and 'Cancel' buttons. The background window shows a table of sessions and a 'Tag Workspace' area.

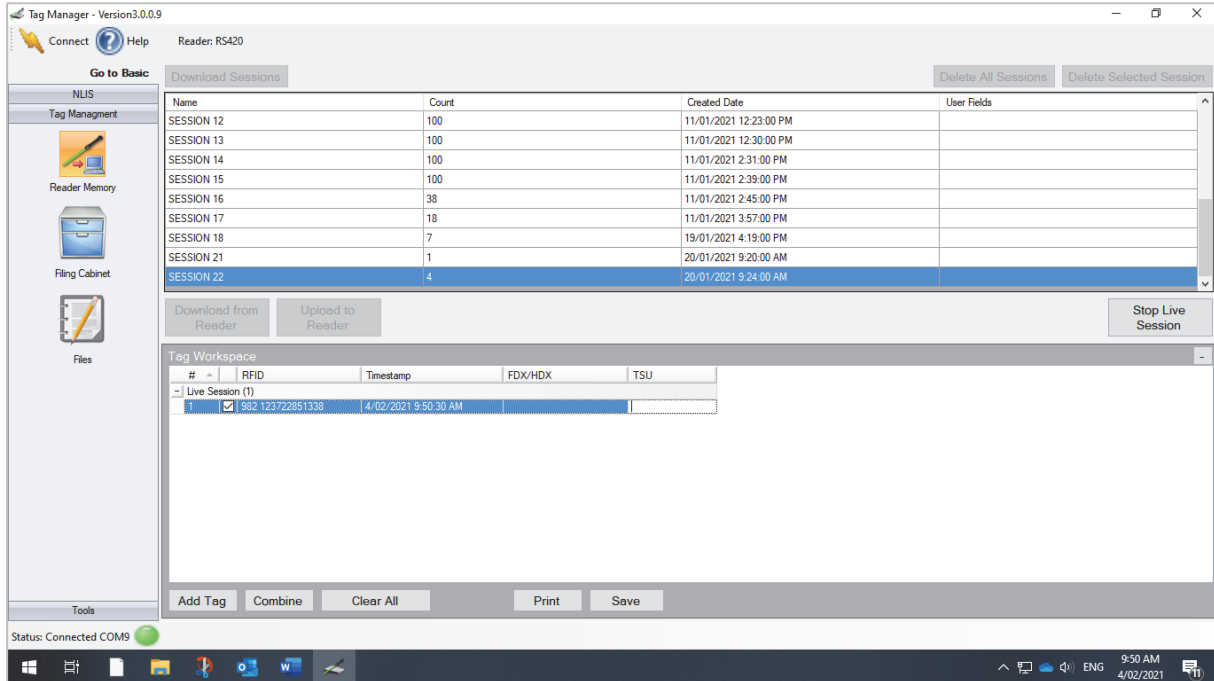
Name	Count	Created Date	User Fields
SESSION 12	100	11/01/2021 12:23:00 PM	
SESSION 13	100	11/01/2021 12:30:00 PM	
SESSION 14	100	11/01/2021 2:31:00 PM	
SESSION 15	100	11/01/2021 2:39:00 PM	
SESSION 16	38	11/01/2021 2:45:00 PM	
SESSION 17	18	11/01/2021 3:57:00 PM	
SESSION 18	7	19/01/2021 4:19:00 PM	
SESSION 21	1	20/01/2021 9:20:00 AM	
SESSION 22	4	20/01/2021 9:24:00 AM	



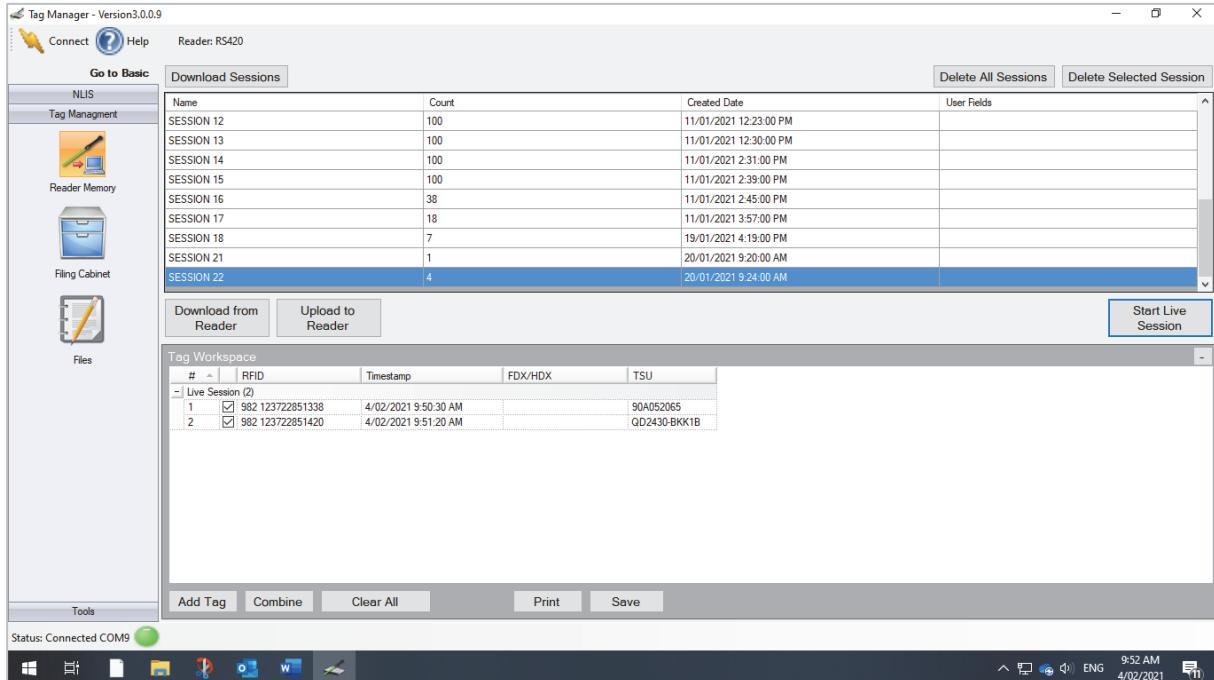
The screenshot shows the Tag Manager interface with the 'Tag Workspace' table visible. The table has columns for '#', 'RFID', 'Timestamp', 'FDX/HDX', and 'TSU'. The 'TSU' column is highlighted, indicating it is the active column for recording.

#	RFID	Timestamp	FDX/HDX	TSU

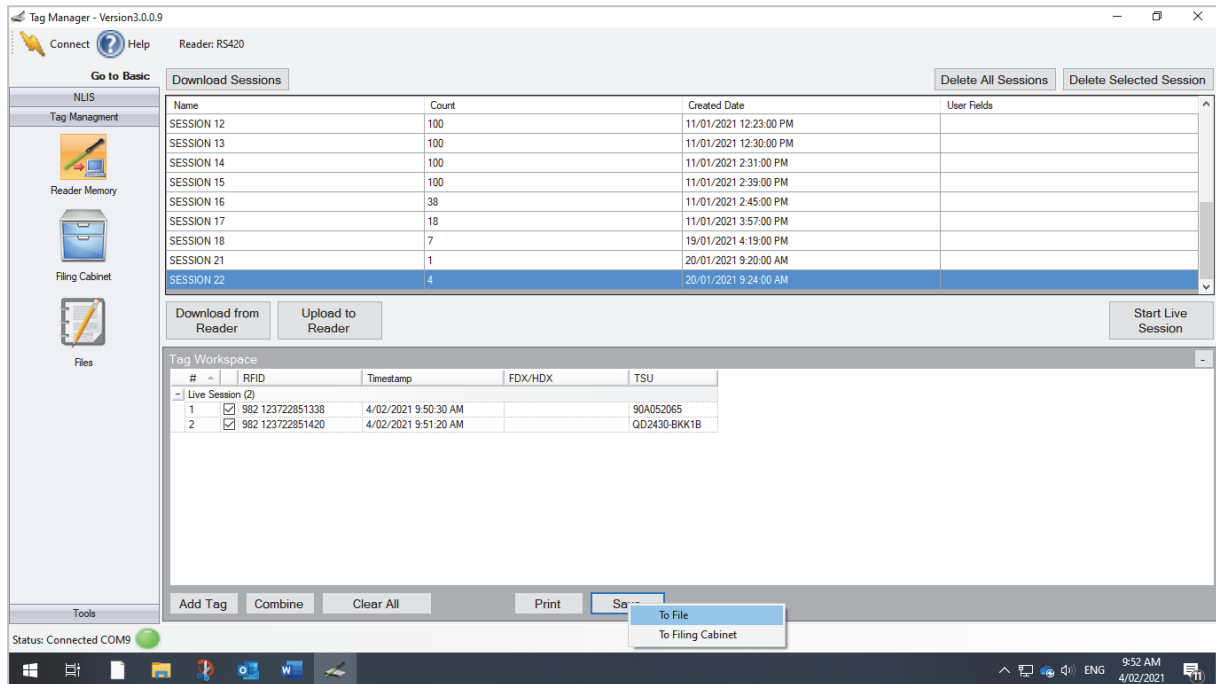
4. Scan RFID Tag with RS420 then click on TSU column in line with RFID.



5. Scan Barcode on TSU and repeat process.



6. After scanning session completed, save file to document on PC as a csv file.



7. Saved session in csv file format.

